

In This Issue:

1. **NDIS Peer Support Group meeting dates (North and South)**
2. **Festival of Smiles - 27 November 2016 - Celebrating International Day for People with Disability**
3. **NDIA Board - Lived Experience Matters: Tell your Minister**
4. **NDIS Rollout Dates in Tasmania**
5. **2016 NDIS Supporter Survey - Every Australian Counts**
6. **Autism CRC—Teachers needed for research to help children on the spectrum stay on task**
7. **Carols by Candlelight - Hobart**
8. **Aladdin The Hit Broadway Musical - Autism-Friendly Performance**

1. NDIS Peer Support Group meeting dates

(South) - 22 November 2016

The next meeting is scheduled for this evening - Tuesday 22 November 2016 at 21 Goulburn Street, Hobart.

Please arrive from 5.30pm for a 6:00pm start.

(North) Change of date - 15th February 2017

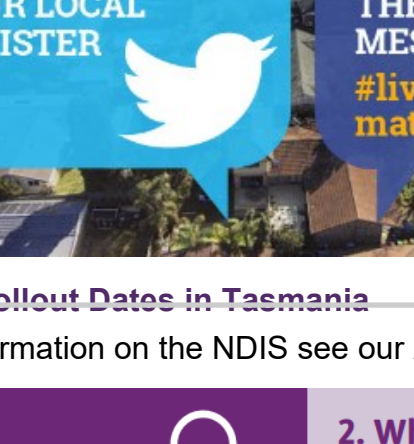
12:00 - 2:00pm

Northern Children's Network (NCN Building)
59D Amy Road (off Waterworth Lane), Newstead

2. Festival of Smiles—27 November 2016—Celebrating International Day for People with Disability



3. NDIA Board - Lived Experience Matters - Tell your Minister



TELL YOUR MINISTER:

THE NDIA BOARD NEEDS LIVED EXPERIENCE

USE OUR LOOK-UP TOOL TO FIND YOUR LOCAL MINISTER

AND SEND THEM A MESSAGE THAT #livedexperience matters

4. NDIS Rollout Dates in Tasmania

For more information on the NDIS see our [Autism Tasmania website](#)

1. What?

The Commonwealth and Tasmanian governments have agreed on how the NDIS will be rolled out in Tasmania. In Tasmania, the NDIS will be operating state-wide for all age groups by July 2019. The NDIS is currently available for people aged 15-24.

2. When?

The NDIS is a big change and it will be progressively rolled out in Tasmania. People will move to the NDIS at different times depending on age and living circumstances. The NDIS will be operating state-wide for all age groups by July 2019.

3. Who?

1 July 2016	1 January 2017	1 July 2017	1 January 2018	1 July 2018	1 January 2019
12-14 yrs old	25-28 yrs old	4-11 yrs old	29-34 yrs old	0-3 yrs old + 35-49 yrs old	50-64 yrs old

Eligible residents in shared supported accommodation will access the NDIS together on a house-by-house basis.

4. How?

The National Disability Insurance Agency (NDIA) is working closely with relevant Commonwealth and Tasmanian government departments to ensure a smooth NDIS transition for all existing and new clients, their families and providers.

5. What can I do to prepare?

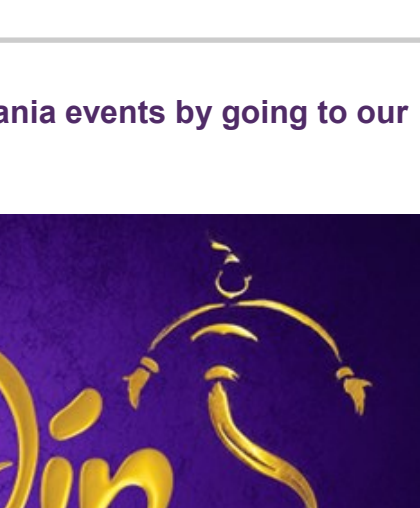
If you currently receive disability services and are eligible to enter the NDIS, you will be contacted before you transition. If you are currently not receiving support, you may still be able to access the NDIS. Information and resources are available at www.ndis.gov.au/tas

Visit our website at www.ndis.gov.au/tas
Call us on **1800 800 110**

5. 2016 NDIS Supporter Survey—Every Australian Counts

People with disability, their families and carers and the service provider sector must have an NDIS that's the best it can be.

That means letting our decision makers know what's working, what isn't and what needs to be done to make it better.

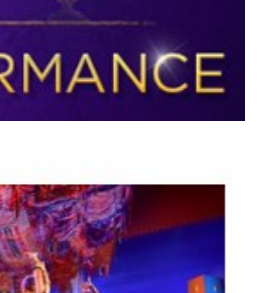


Every Australian Counts will be releasing their first Community Report Card in December and they need you to shape it.

This is your NDIS. Fill out this simple [survey](#) to make sure you have your say.

6. Autism CRC—Teachers needed for research to help children on the Spectrum stay on task

Researchers with the Autism CRC are looking for mainstream primary school teachers in Australia to complete an online survey. The survey is in two parts – each taking around 10-15 minutes - and will ask participants to look at a resource aimed at helping teachers to support students on the autism spectrum to stay on task and transition between tasks.

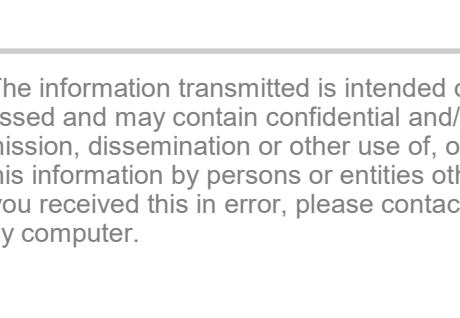


Teachers are not asked to implement anything or to give any specific information about classes and students, just to give their opinion on a draft copy of the resource.

Recruitment for the survey will finish at the end of term 4, 2016. Please email Libby Macdonald – elizabeth.macdonald2@griffithuni.edu.au - if you are interested in taking part in this research or would like further information

7. Your Habitat City of Hobart Carols by Candlelight - Royal Tasmanian Botanic Gardens - Sunday 18 December 2016

Presented by Exit Left, the Your Habitat City of Hobart Carols by Candlelight is a beautiful evening of local and national talent performing old Christmas favourites and new works in the beautiful Royal Tasmanian Botanic Gardens.



Don't miss this great free evening of family entertainment and carols singing to celebrate Christmas. Tickets for the free event are available from <http://www.exitleftproductions.com.au/hobartcarols> from 9am 12 December.

Gates open at 5pm with the main Carols program starting at 8pm.

- An accessible viewing area, including seating for family, friends and carers (small groups only) is available to those who wish to use this area. The assigned area has a good view and is a flat area.
- The entire program will be signed by Auslan interpreters. There will be a dedicated viewing area for patrons with hearing impairment provided close to the interpreters.
- Large print event programmes available on request.
- Trained assistance animals (such as guide dogs) are welcome.
- A drop-off and pick-up area will be available alongside the event site

Further information about the Your Habitat City of Hobart Carols by Candlelight can be found here

<http://www.exitleftproductions.com.au/hobartcarols-faq>

8. Aladdin - The hit Broadway Musical - Autism Friendly performance - 4 March 2017 - Sydney

****Keep up to date with Autism Tasmania events by going to our website****

IN ASSOCIATION WITH **AUTISM AWARENESS**

Disney Aladdin
THE HIT BROADWAY MUSICAL

AUTISM-FRIENDLY PERFORMANCE

How to Book

Online

Phone:
Ticketmaster
1300 889 278
Monday to Friday 9:00am to 5:00pm.



In Person:
Capitol Theatre Box Office
02 9320 5000
13 Campbell St Haymarket
Mon to Fri 9.00am to 5.00pm

Tickets are limited, be quick!



Photo credits: Deen van Meer
All images ©Disney

DISCLAIMER: The information transmitted is intended only for the person or entity to which it is addressed and may contain confidential and/or privileged material. Any review, retransmission, dissemination or other use of, or taking of any action in reliance upon, this information by persons or entities other than the intended recipient is prohibited. If you received this in error, please contact the sender and delete the material from any computer.